

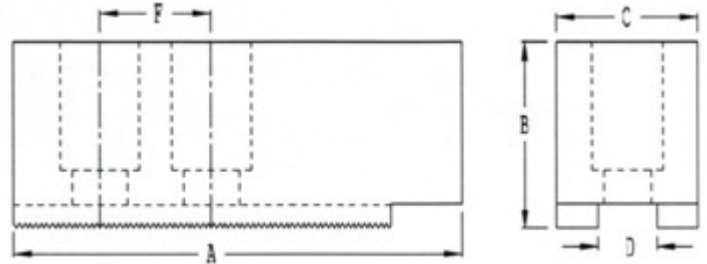


KCM

1.5 mm x 60° Serrations

KITIGAWA Soft Jaws Series B200, BT200 & B215

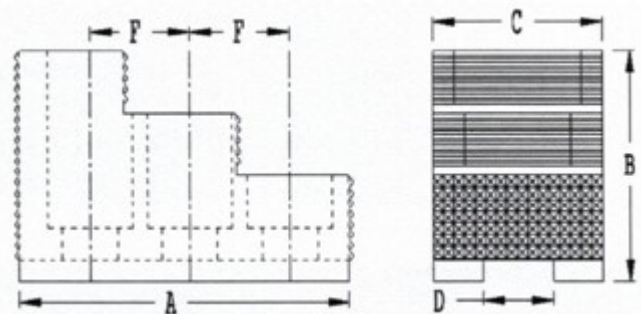
- For Pointed Jaw, add “P” to suffix
- For Aluminum Jaws, add “A” to prefix
- 1.5mm x 60° serrated type jaws
- Made of 1018 cold-rolled steel—can be hardened
- 8620, 4140, etc. available as special order



Chuck Size	Part Number	A	B	C	Extra High Part Number	B	Critical Dimensions		Screw Size
							D	F	
6	KKC06S	2.75	1.50	1.25	KKC06SE	3.00	0.473	0.787	10 mm
6	KKC06LS	3.00	1.50	1.25	KKC06SLE	3.00	0.473	0.787	10 mm
8	KKC08S	3.75	2.00	1.50	KKC08SE	4.00	0.551	0.984	12 mm
8	KKC08LS	4.00	2.00	1.50	KKC08SLE	4.00	0.551	0.984	12 mm
10	SKT100	4.50	2.00	1.50	SKT102	4.00	0.630	1.181	12 mm
10	KKC010S	4.75	2.00	1.75	KKC010SE	4.00	0.630	1.181	12 mm
10	KKC010LS	5.00	2.00	1.75	KKC010SLE	4.00	0.630	1.181	12 mm
12	KKC012S	5.50	2.50	2.00	KKC012SE	4.00	0.860	1.181	16 mm
12	KKC012LS	6.00	2.50	2.00	KKC012SLE	4.00	1.830	1.181	16 mm
15	KKC015S	5.75	2.50	2.50	KKC015SE	4.00	1.005	1.690	20 mm
15	KKC015LS	7.50	2.50	2.50	KKC015SLE	4.00	1.005	1.690	20 mm

KITIGAWA Double Step Reversible Hard Jaws Series B200, BT200 & B215

- Smooth serrations standard on step
- Other serrations available as special order



Chuck Size	Part Number	A	B	C	Height to 1st Step	Height to 2nd Step	Critical Dimensions		Screw Size
							D	F	
6	KHJKC06	2.750	1.750	1.125	1.000	1.375	0.473	0.790	10 mm
8	KHJKC08	3.700	2.250	1.500	1.000	1.625	0.551	0.984	12 mm
10	KHJKC10	4.000	2.750	1.750	1.250	2.000	0.630	1.181	12 mm
12	KHJKC12	4.000	2.750	2.000	1.250	2.000	0.830	1.181	16 mm
15	KHJKC15	6.000	3.000	2.500	1.625	2.312	1.000	1.690	20 mm

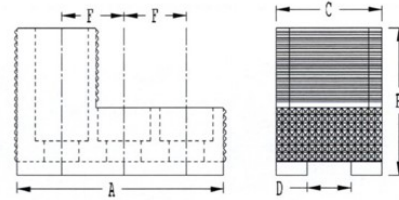


KCM

1.5 mm x 60° Serrations

KITIGAWA Single Step Reversible Hard Jaws Series B200, BT200 & B215

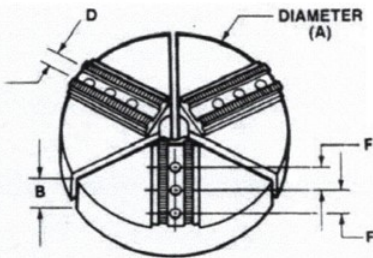
- 1.5mm x 60° serrated type jaws
- Smooth serrations standard on step
- Other serrations available as special order



Chuck Size	Part Number	A	B	C	Height to 1st Step	Critical Dimensions		Screw Size
						D	F	
6	K1HJKC06	2.75	1.75	1.125	1.00	0.473	0.790	10 mm
8	K1HJKC08	3.70	2.25	1.50	1.25	0.551	0.984	12 mm
10	K1HJKC10	4.00	2.00	1.75	1.25	0.630	1.181	12 mm
12	K1HJKC12	4.00	2.00	2.00	1.25	0.830	1.181	16 mm
15	K1HJKC15	6.00	2.50	2.50	1.50	1.000	1.690	20 mm

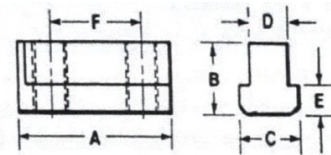
KITIGAWA Aluminum Wrap-Around Jaws Series B200, BT200 & B215

- For Steel jaws, use "S" prefix.
- For Cast Iron jaws, use "CI" prefix.



Chuck Size	Part Number	B	Extra High Part Number	B	Critical Dimensions		Screw Size
					D	F	
6	AKWK006	2.00	AKWK006E	4.00	0.473	0.790	10 mm
8	AKWK008	2.00	AKWK008E	4.00	0.551	0.984	12 mm
10	AKWK010	2.00	AKWK010E	4.00	0.630	1.181	12 mm
12	AKWK012	2.50	AKWK012E	4.00	0.830	1.181	16 mm
15	AKWK015	2.50	AKWK015E	4.00	1.005	1.690	20 mm

KITIGAWA Jaw Nuts Series B200, BT200 & B215



Chuck Size	Part Number	A	B	C	Critical Dimensions			Thread Size
					D	E	F	
6	JNKBK06	1.417	0.728	0.689	0.472	0.295	0.787	M10-1.50
8	JNKBK08	1.842	0.897	0.807	0.551	0.335	0.984	M12-1.75
10	JNKBK10	1.981	0.846	0.886	0.630	0.335	1.181	M12-1.75
12	JNKBK12	2.565	1.090	1.160	0.825	0.453	1.181	M16-2.00
15	JNKBK15	3.149	1.550	1.375	1.003	0.758	1.690	M20-2.50

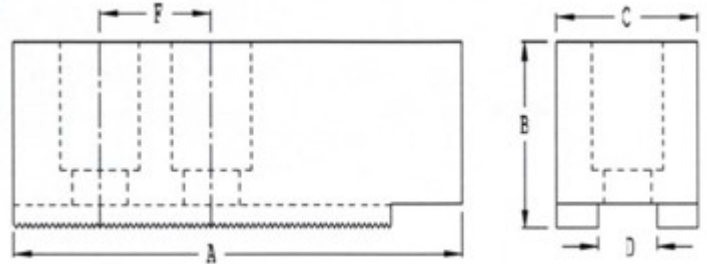


KCM

1.5 mm 60° Serrations

KITIGAWA Soft Jaws Series HJ, HO, HOS, HOH, B, and BT

- For Pointed Jaw, add “P” to suffix
- For Aluminum Jaws, add “A” to prefix
- 1.5mm x 60° serrated type jaws
- Made of 1018 cold-rolled steel—can be hardened
- 8620, 4140, etc. available as special order

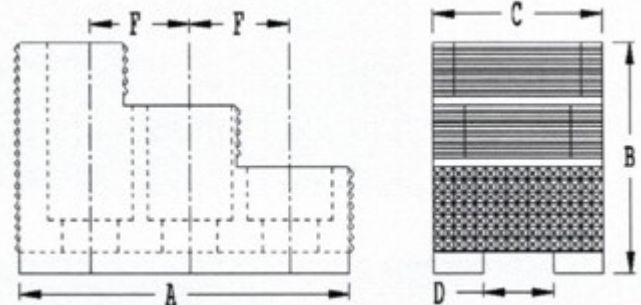


Chuck Size	Part Number	A	B	C	Extra High Part Number	B	Critical Dimensions		Screw Size
							D	F	
6	KKC06S	2.75	1.50	1.25	KKC06SE	3.00	0.473	0.787	10 mm
6	KKC06LS	3.00	1.50	1.25	KKC06SLE	3.00	0.473	0.787	10 mm
8	KKC08S	3.75	2.00	1.50	KKC08SE	4.00	0.551	0.984	12 mm
8	KKC08LS	4.00	2.00	1.50	KKC08SLE	4.00	0.551	0.984	12 mm
10	KKC010S	4.75	2.00	1.75	KKC010SE	4.00	0.630	1.181	12 mm
10	KKC010LS	5.00	2.00	1.75	KKC010SLE	4.00	0.630	1.181	12 mm
12	KKC012S	5.50	2.50	2.00	KKC012SE	4.00	0.710	1.181	16 mm
12	KKC012LS	6.00	2.50	2.00	KKC012SLE	4.00	0.710	1.181	16 mm
15-18	KKC015S	6.00	2.50	2.50	KKC012SLE	4.00	0.866	1.181	16 mm
15-18	KKC015SL	7.50	2.50	2.50	KKC015SLE	4.00	0.866	1.690	20 mm
21-24*	KKK24KS	7.00	3.00	2.50	KKK24KSE	4.00	0.984	2.360	20 mm
21-24	KKK24CS	8.25	3.00	3.00	KKK24CSE	4.00	0.984	3.150	20 mm

* Denotes 3mm x 60° serrated type jaw

KITIGAWA Double Step Reversible Hard Jaws Series HJ, HO, HOS, HOH, B, and BT

- Smooth serrations standard on step
- Other serrations available as special order



Chuck Size	Part Number	A	B	C	Height to 1st Step	Height to 2nd Step	Critical Dimensions		Screw Size
							D	F	
6	KKKHJ06	2.750	1.750	1.125	1.000	1.375	0.473	0.790	10 mm
8	KKKHJ08	3.700	2.250	1.500	1.00	1.625	0.551	0.984	12 mm
10	KKKHJ10	4.000	2.750	1.750	1.250	2.000	0.630	1.181	12 mm
12	KKKHJ12	4.000	2.750	2.000	1.250	2.000	0.830	1.181	16 mm
15	KKKHJ15	6.000	3.000	2.500	1.625	2.312	1.000	1.690	20 mm

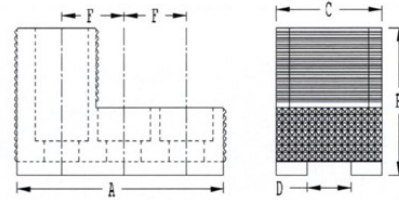


KCM

1.5 mm 60° Serrations

KITIGAWA Single Step Reversible Hard Jaws Series HJ, HO, HOS, HOH, B and BT

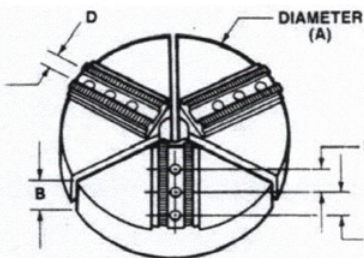
- 1.5mm x 60° serrated type jaws
- Smooth serrations standard on step
- Other serrations available as special order



Chuck Size	Part Number	A	B	C	Height to 1st Step	Critical Dimensions		Screw Size
						D	F	
6	K1KKHJ06	2.56	1.38	1.125	0.875	0.473	0.790	10 mm
8	K1KKHJ08	3.70	2.25	1.50	1.250	0.551	0.984	12 mm
10	K1KKHJ10	4.00	2.00	1.75	1.250	0.630	1.181	12 mm
12	K1KKHJ12	4.125	2.00	2.00	1.250	0.710	1.181	16 mm
15	K1KKHJ15	6.00	2.50	2.50	1.500	0.866	1.690	20 mm

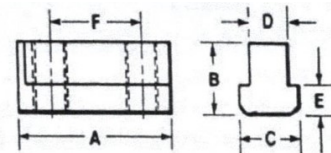
KITIGAWA Aluminum Wrap-Around Jaws Series HJ, HO, HOS, HOH, B and BT

- For Steel jaws, use "S" prefix.
- For Cast Iron jaws, use "CI" prefix.



Chuck Size	Part Number	B	Extra High Part Number	B	Critical Dimensions		Screw Size
					D	F	
6	AKKWA06	2.00	AKKWA06E	4.00	0.473	0.790	10 mm
8	AKKWA08	2.00	AKKWA08E	4.00	0.551	0.984	12 mm
10	AKKWA10	2.00	AKKWA10E	4.00	0.630	1.181	12 mm
12	AKKWA12	2.50	AKKWA12E	4.00	0.710	1.181	16 mm
15	AKKWA15	2.50	AKKWA15E	4.00	0.866	1.690	20 mm

KITIGAWA Jaw Nuts Series HJ, HO, HOS, HOH, B and BT



Chuck Size	Part Number	A	B	C	Critical Dimensions			Thread Size
					D	E	F	
6	JNKKK06	1.440	0.890	0.689	0.472	0.295	0.787	M10-1.50
8	JNKKK08	1.880	1.000	0.807	0.551	0.374	0.984	M12-1.75
10	JNKKK10	2.160	1.000	0.885	0.629	0.374	1.181	M12-1.75
12	JNKKK12	2.185	1.320	1.040	0.708	0.531	1.181	M14-2.00
15	JNKKK15	3.150	1.790	1.320	0.864	0.649	1.690	M20-2.50

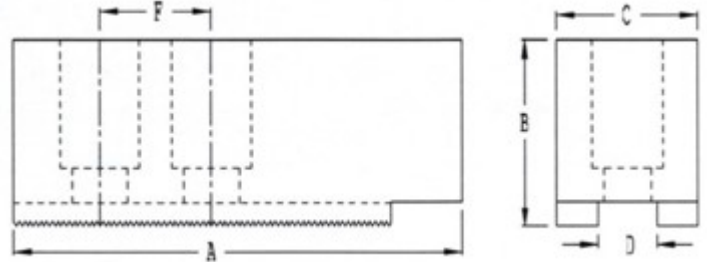


KCM

1.5 mm 60° Serrations

MATSUMOTO Soft Jaws Series MMK and ZA

- For Pointed Jaw, add “P” to suffix
- For Aluminum Jaws, add “A” to prefix
- 1.5mm x 60° serrated type jaws
- Made of 1018 cold-rolled steel—can be hardened
- 8620, 4140, etc. available as special order

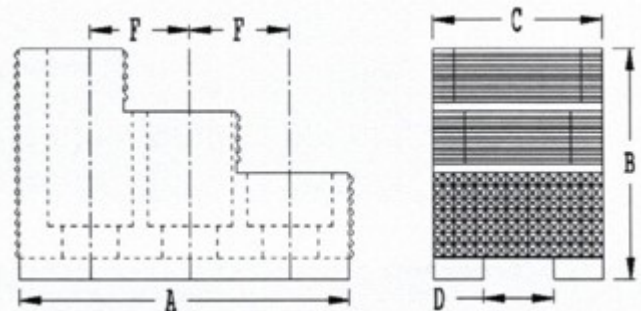


Chuck Size	Part Number	A	B	C	Extra High Part Number	B	Critical Dimensions		Screw Size
							D	F	
5	MMK05S	2.75	1.00	1.00	MMK05SE	3.00	0.400	0.745	8 mm
6	MMK06S	3.15	1.50	1.25	MMK06SE	3.00	0.433	0.985	8 mm
8	KKC08S	3.75	2.00	1.50	KKC08SE	4.00	0.551	0.985	12 mm
8	KKC08LS	4.00	2.00	1.50	KKC08SLE	4.00	0.551	0.985	12 mm
10	KKC010S	4.75	2.00	1.75	KKC010SE	4.00	0.630	1.187	12 mm
12	KKK12S	5.50	2.50	2.00	MMK12SE	4.00	0.710	1.181	14 mm
15	KKC15S	5.75	2.50	2.50	KKK15SLE	4.00	0.866	1.690	20 mm
15*	MMK15S	5.75	2.50	2.50	MMK15SE	4.00	0.866	1.960	20 mm

* Denotes 3mm x 60° serrated type jaw

MATSUMOTO Double Step Reversible Hard Jaws Series MMK and ZA

- Smooth serrations standard on step
- Other serrations available as special order



Chuck Size	Part Number	A	B	C	Height to 1st Step	Height to 2nd Step	Critical Dimensions		Screw Size
							D	F	
6	MMKHJ06	2.245	1.75	1.25	0.750	1.250	0.433	0.629	8 mm
8	MMKHJ08	3.780	2.50	1.50	1.250	1.875	0.551	0.984	12 mm
10	MMKHJ10	4.215	3.00	1.750	1.250	2.125	0.630	0.984	12 mm
12	MMKHJ12	4.550	3.00	2.00	1.250	2.125	0.710	1.260	14 mm
15	MMKHJ15	6.000	3.00	2.50	1.565	2.250	0.866	1.965	20 mm

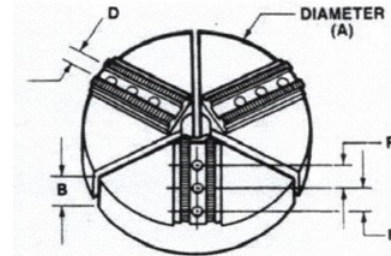


KCM

1.5 mm 60° Serrations

MATSUMOTO Aluminum Wrap-Around Jaws Series MMK and ZA

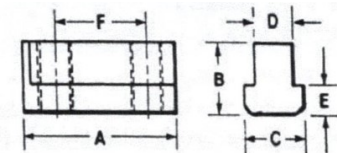
- For Steel jaws, use “S” prefix.
- For Cast Iron jaws, use “CI” prefix.



Chuck Size	Part Number	B	Extra High Part Number	B	Critical Dimensions		Screw Size
					D	F	
6	AKMK06	2.00	AKMK06E	4.00	0.433	0.985	8 mm
8	AKMK08	2.00	AKMK08E	4.00	0.551	0.985	12 mm
10	AKMK10	2.00	AKMK10E	4.00	0.630	1.187	12 mm
12	AKMK12	2.50	AKMK12E	4.00	0.710	1.181	14 mm
15*	AKMK15	2.50	AKMK15E	4.00	0.866	1.960	20 mm

* Denotes 3mm x 60° serrated type jaw

MATSUMOTO Jaw Nuts Series MMK and ZA



Chuck Size	Part Number	A	B	C	Critical Dimensions			Thread Size	Type
					D	E	F		
6	JNMK06	1.575	0.787	0.689	0.433	0.196	0.985	8 mm	Soft Jaw
6	JNMK06HT	1.220	0.787	0.689	0.433	0.196	0.630	8 mm	Hard Jaw
8	JNMK08	1.771	0.905	0.787	0.551	0.335	0.985	12 mm	Soft Jaw
8	JNMK08HT	1.575	0.866	0.787	0.551	0.335	0.985	12 mm	Hard Jaw
10	JNMK10	1.969	0.905	0.905	0.630	0.315	1.187	12 mm	Soft Jaw
10	JNMK10HT	1.772	0.905	0.905	0.630	0.315	0.985	12 mm	Hard Jaw
12	JNMK12	2.220	1.181	0.905	0.710	0.551	1.181	14 mm	Soft Jaw
12	JNMK12HT	2.125	1.181	1.141	0.710	0.551	1.260	14 mm	Hard Jaw
15	JNMK15	3.150	1.555	1.339	0.866	0.768	1.960	20 mm	Soft Jaw



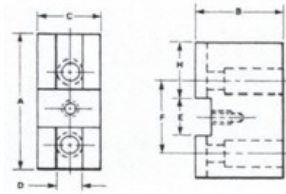
KCM

Square Serrated

Soft Jaws

Series Buck, Gisholt, PBA, S-P and Warner & Swasey

- For Pointed Jaw, add "P" to suffix
- Made of 1018 cold-rolled steel—can be hardened
- 8620, 4140, etc. available as special order

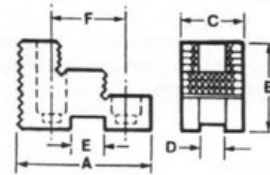


Chuck Size	Part Number	A	B	C	Extra High Part Number	B	Critical Dimensions			Screw Size	Screw Size
							D	E	F		
10-12	SQK10	4.50	2.50	1.75	SQK10E	4.00	0.750	0.994	1.750	5/16-18	1/2-13
12	SQK12	5.00	2.50	1.75	SQK12E	4.00	0.750	0.994	1.750	5/16-18	5/8-11
15	SQK15	5.00	2.00	2.25	SQK15E	5.00	1.000	1.488	2.500	3/8-16	3/4-10
18	SQK18	6.00	3.00	2.25	SQK18E	5.00	1.000	1.488	2.500	3/8-16	3/4-10
21-24	SQK24	6.25	3.00	2.25	SQK24E	5.00	1.000	1.488	3.000	3/8-16	3/4-10

Double Step Reversible Hard Jaws

Series Buck, Gisholt, PBA, S-P and Warner & Swasey

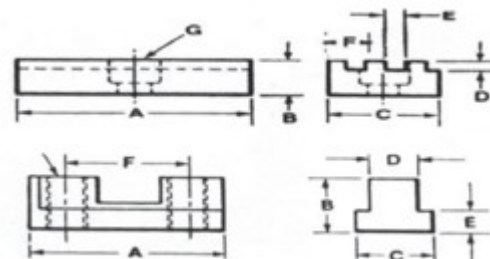
- Smooth serrations standard on step
- Other serrations available as special order



Chuck Size	Part Number	A	B	C	Height to 1st Step	Height to 2nd Step	Critical Dimensions			Screw Size
							D	E	F	
10	HJSQS10	3.800	2.500	1.750	1.250	1.875	0.750	0.994	1.750	1/2-13
12	HJSQS12	4.500	2.500	1.750	1.250	1.875	0.750	0.994	1.750	5/8-11
15-18	HJSQS15	4.750	3.000	2.250	1.500	2.250	1.000	1.488	2.500	3/4-10
21-24	HJSQS24	5.750	3.000	2.250	1.500	2.250	1.000	1.488	3.000	3/4-10

SQUARE SERRATED KEYS

Chuck Size	Part Number	A	B	C	Screw Size
10-12	12SQKK	1.68	0.50	0.993	5/16-18
15-18	18SQKK	2.25	0.50	1.487	3/8-16
21-24	24SQKK	2.25	0.50	1.487	3/8-16



JAW NUTS

Chuck Size	Part Number	A	B	C	D	E	F	G
10-12	JN1012	2.62	1.000	1.000	0.748	0.375	1.750	1/2-13
12	JN12	2.50	1.000	1.000	0.748	0.375	2.000	5/8-11
15-18	JN18	3.75	1.250	1.250	1.000	0.437	2.500	3/4-10
21-24	JN24	4.50	1.250	1.250	1.000	0.437	3.00	3/4-10



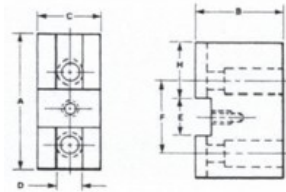
KCM

Acme Serrated

Soft Jaws

Series Autoblok, Buck, Cushman, Logansport, and PBa

- For Pointed Jaw, add "P" to suffix
- Made of 1018 cold-rolled steel—can be hardened
- 8620, 4140, etc. available as special order

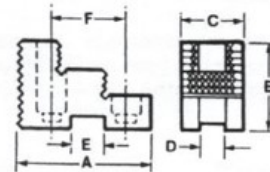


Chuck Size	Part Number	A	B	C	Extra High Part Number	B	Critical Dimensions			Screw Size
							D	E	F	
10	ACM10	4.250	2.312	1.75	ACM10E	3.812	0.750	1.031	1.750	1/2-13
12	ACM12	5.125	2.312	1.75	ACM12E	3.812	0.875	1.031	2.000	5/8-11
15-18	ACM15	6.125	3.500	2.50	ACM15E	4.750	1.000	1.530	2.500	3/4-10
21-24	ACM24	6.500	3.500	2.50	ACM24E	4.750	1.000	1.530	3.000	-9

Double Step Reversible Hard Jaws

Series Buck, Gisholt, PBA, S-P and Warner & Swasey

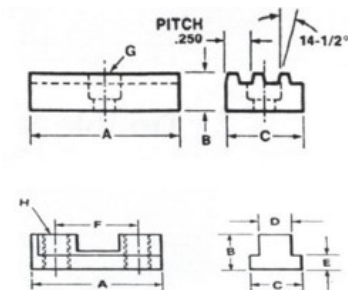
- Smooth serrations standard on step
- Other serrations available as special order



Chuck Size	Part Number	A	B	C	Height to 1st Step	Height to 2nd Step	Critical Dimensions			Screw Size
							D	E	F	
10	HJACM10	4.125	2.500	1.750	1.125	1.750	0.750	1.031	1.750	1/2-13
12	HJACM12	5.125	2.500	1.750	1.125	1.750	0.875	1.031	2.000	5/8-11
15-18	HJACM15	6.000	3.500	2.500	1.312	2.500	1.000	1.531	2.500	3/4-10
21-24	HJACM24	6.000	3.500	2.500	1.312	2.500	1.000	1.531	3.000	7/8-9

ACME KEYS

Chuck Size	Part Number	A	B	C	Screw Size
10-12	ACE10-12	1.675	0.500	1.030	5/16-18
15-18	ACE15-18	2.437	0.500	1.530	3/8-16
21-24	ACE21-24	2.875	0.500	1.530	3/8-16



JAW NUTS

Chuck Size	Part Number	A	B	C	D	E	F	G
10	JNAC10	2.50	0.640	0.940	0.678	0.381	1.750	1/2-13
12	JNAC12	3.00	0.745	1.060	0.02	0.440	2.000	5/8-11
15-18	JNAC15	3.50	0.931	1.250	0.933	0.550	2.500	3/4-10
21-24	JNAC24	4.20	1.186	1.555	1.159	0.684	3.000	7/8-9

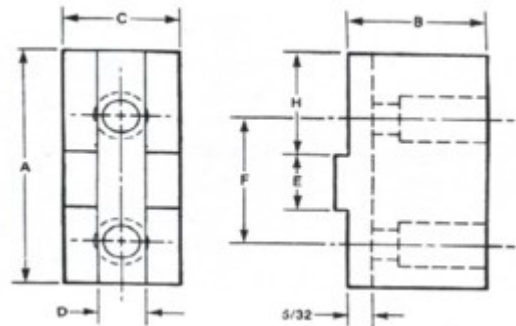


KCM

American Standard Tongue & Groove

Medium Duty Soft Top Jaws Series Bison, Buck, Cushman, Rohm, PBA, and Warner-Swasey

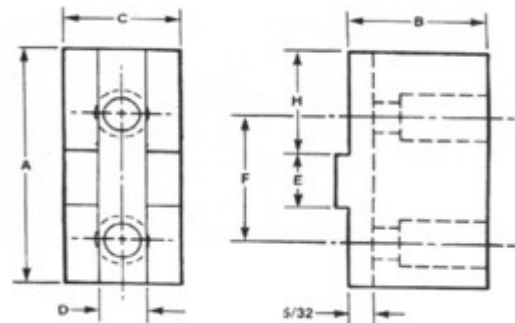
- For Pointed Jaw, add “P” to suffix
- For Aluminum Jaws, add “A” to prefix
- 1.5mm x 60° serrated type jaws
- Made of 1018 cold-rolled steel—can be hardened
- 8620, 4140, etc. available as special order



Chuck Size	Part Number	A	B	C	Extra High Part Number	B	Critical Dimensions			Screw Size
							D	E	F	
6	TGS06	2.800	1.375	1.000	TGS06E	3.38	0.314	0.4985	1.500	3/8-16
Buck6	TGBT06	2.750	1.500	1.000	TGBT06E	3.38	0.739	0.375	1.680	5/16-18
8	TGS08	3.570	1.875	1.250	TGS08E	3.38	0.314	0.4985	1.750	3/8-16
10	TGS10	3.937	1.875	1.500	TGS10E	3.88	0.502	0.7485	2.125	1/2-13
12	TGS12	4.500	2.375	1.750	TGS12E	3.88	0.502	0.7485	2.500	1/2-13
15-36	TGS15	5.500	3.375	2.500	TGS15E	4.88	0.502	0.7485	3.000	3/4-10

Offset Medium Duty Soft Top Jaws Series Bison, Buck, Cushman, Rohm, PBA, and Warner-Swasey

- For Pointed Jaw, add “P” to suffix
- For Aluminum Jaws, add “A” to prefix
- 1.5mm x 60° serrated type jaws
- Made of 1018 cold-rolled steel—can be hardened
- 8620, 4140, etc. available as special order



Chuck Size	Part Number	A	B	C	Extra High Part Number	B	Critical Dimensions				Screw Size
							D	E	F	H	
6	TGSOF06	3.250	1.375	1.000	TGSOF06E	3.38	0.314	0.4985	1.500	1.562	3/8-16
8	TGSOF08	3.750	1.875	1.250	TGSOF08E	3.38	0.314	0.4985	1.750	1.687	3/8-16
10	TGSOF10	4.625	1.875	1.500	TGSOF10E	3.38	0.502	0.7485	2.125	1.937	1/2-13
12	TGSOF12	5.375	2.375	1.750	TGSOF12E	3.88	0.502	0.7485	2.500	3.125	1/2-13
15-36	TGSOF15	6.375	3.375	2.500	TGSOF15E	4.88	0.502	0.7485	3.000	3.750	3/4-10

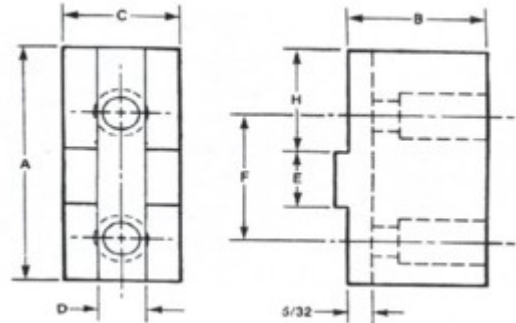


KCM

American Standard Tongue & Groove

Heavy Duty Soft Top Jaws Series Bison, Buck, Cushman, Rohm, PBA, and Warner-Swasey

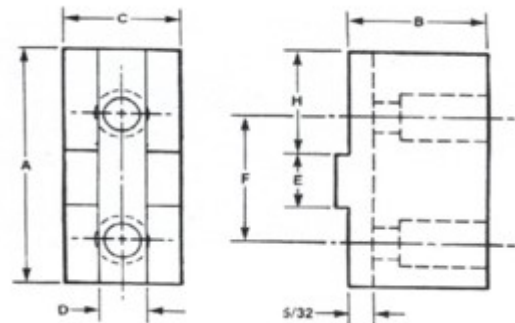
- For Pointed Jaw, add "P" to suffix
- For Aluminum Jaws, add "A" to prefix
- 1.5mm x 60° serrated type jaws
- Made of 1018 cold-rolled steel—can be hardened
- 8620, 4140, etc. available as special order



Chuck Size	Part Number	A	B	C	Extra High Part Number	B	Critical Dimensions			Screw Size
							D	E	F	
6	TGHD06	2.812	1.375	1.500	TGHD06E	3.38	0.314	0.4985	1.500	7/16-14
8	TGHD08	3.312	1.875	1.500	TGHD08E	3.38	0.314	0.4985	1.750	1/2-13
10	TGHD10	3.937	1.875	1.750	TGHD10E	3.88	0.502	0.7485	2.125	5/8-11
12	TGHD12	4.500	2.125	2.000	TGHD12E	3.88	0.502	0.7485	2.500	5/8-11
15-36	TGHD15	5.500	3.500	2.500	TGHD15E	4.75	0.502	0.7485	3.000	3/4-10

Offset Heavy Duty Soft Top Jaws Series Bison, Buck, Cushman, Rohm, PBA, and Warner-Swasey

- For Pointed Jaw, add "P" to suffix
- For Aluminum Jaws, add "A" to prefix
- 1.5mm x 60° serrated type jaws
- Made of 1018 cold-rolled steel—can be hardened
- 8620, 4140, etc. available as special order



Chuck Size	Part Number	A	B	C	Extra High Part Number	B	Critical Dimensions				Screw Size
							D	E	F	H	
6	TGOFHD6	3.250	1.375	1.500	TGOFHD6E	3.38	0.314	0.499	1.500	1.562	3/8-16
8	TGOFHD8	3.750	1.875	1.500	TGOFHD8E	3.38	0.314	0.499	1.750	1.687	3/8-16
10	TGOFHD10	4.625	1.875	1.750	TGOFHD10E	3.88	0.502	0.749	2.125	1.937	1/2-13
12	TGOFHD12	5.375	2.125	2.000	TGOFHD12E	3.88	0.502	0.749	2.500	3.125	1/2-13
15-36	TGOFHD15	6.375	3.500	2.500	TGOFHD15E	4.75	0.502	0.749	3.000	3.750	3/4-10